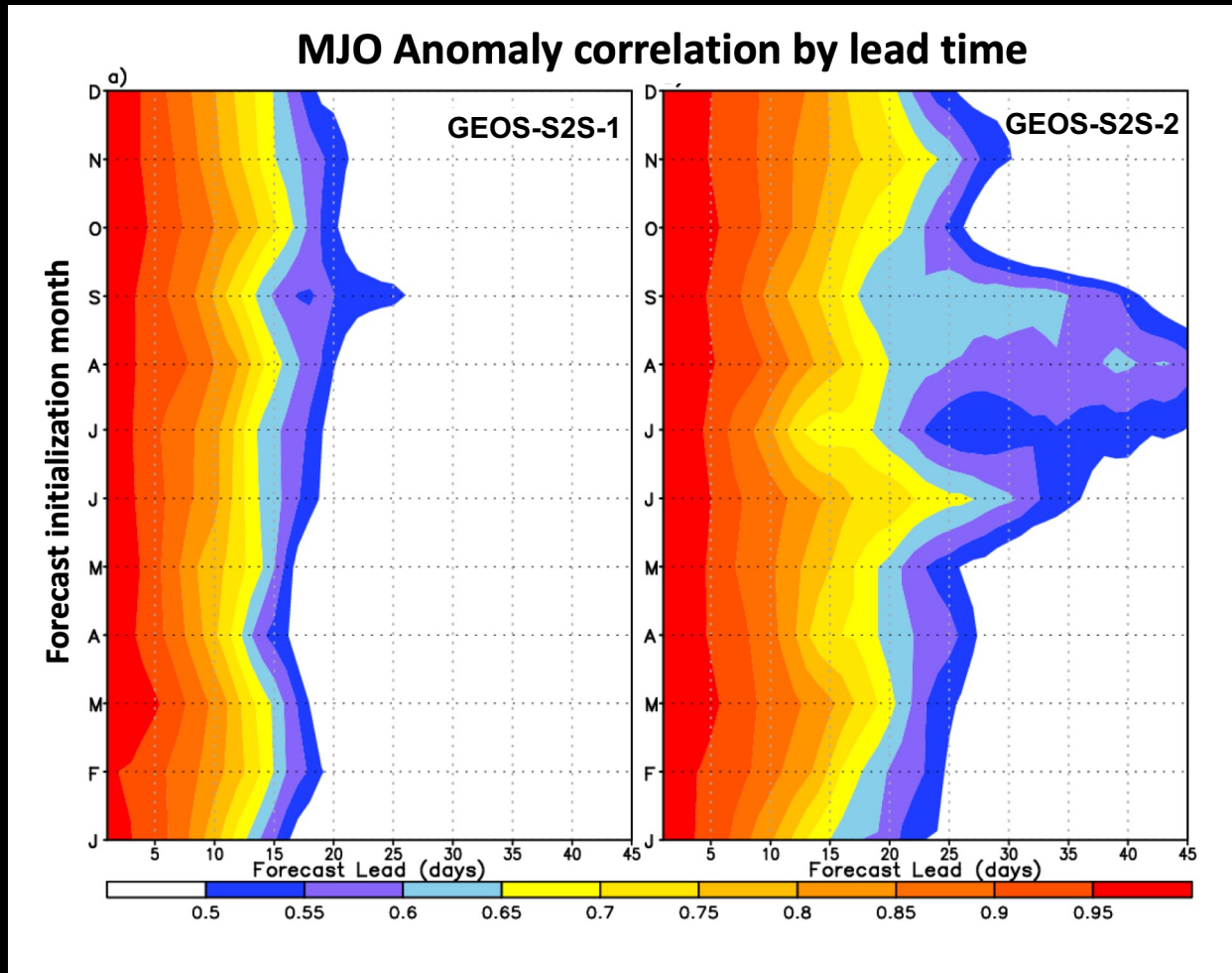


Major Advance in MJO Prediction Skill in GMAO's Near Real Time Seasonal Forecasts



The Madden-Julian Oscillation (MJO) is predicted much more realistically in version 2 of the NASA GEOS-S2S system (GEOS-S2S-2) than in the older version (GEOS-S2S-1). The anomaly correlation from the widely used Real-time Multivariate MJO (RMM) index illustrates an increase of skill by about five days throughout the year (the yellow 0.65 correlation contour advances from about 13 to 18 days) and that there is a prominent improvement in the second half of the year, with correlations of up to 0.6 extending beyond 30 days in August and September in GEOS-S2S-2.

The GEOS-S2S-2 system is described in Molod et al. (2020).